



Test Report

Report No:TQT8040B09E

Date:Feb.27,2026

Page 1 of 12

Applicant Guangzhou Didi Paradise Entertainment Equipment Co., Ltd.
Address 404, Building 5, No.49, Xinshuikeng Section, Xinlu Road, Dalong Street, Panyu District, Guangzhou City

The following sample(s)was /were submitted and identified on behalf of the clients as :

Product Name Indoor children's play equipment
Trademark /
Main Test Model DIDI-ICPE
Additional Model DIDI-RN01 、 DIDI-TP02 、 DIDI-PC03 、 DIDI-KT04 、 DIDI-PJ05 、 DIDI-GC06 、 DIDI-HA07 、 DIDI-ET08 、 DIDI-DT09 、 DIDI-FW10 、 DIDI-ST11、 DIDI-BC12、 DIDI-PP13、 DIDI-CW14
Manufacturer Guangzhou Didi Paradise Entertainment Equipment Co., Ltd.
Address 404, Building 5, No.49, Xinshuikeng Section, Xinlu Road, Dalong Street, Panyu District, Guangzhou City
Standard AS 4685.1-2021
Testing Period Feb.17,2026~ Feb.27,2026
Test Requested Test Method Test samples according to customer requirements
Test Result Please refer to next page(s)



ykk6p6x CEDwzB2

Signed for and on behalf of:



Liu wang/Manager

Date of issue : Feb.27,2026

Shenzhen Tianqi Testing Technology Service Co., Ltd.

This test report is issued by our company in accordance with the service terms printed on the back. Responsibilities, warranties, and legal limitations are defined in the service terms. Unless otherwise stated, the results of this report are solely for the test sample. This report may not be reproduced in part without permission.



Test Report

Report No:TQT8040B09E

Date:Feb.27,2026

Page 2 of 12

No.	Inspection Item	Inspection Requirement (Standard Value)	Conclusion
1	Material Strength	Breaking strength of ropes/straps ≥ 1500 N, number of broken strands ≤ 3	Pass
2	Free Fall Height	For movable play equipment ≤ 1500 mm	Pass
3	Impact Buffer Zone	When height above ground > 600 mm, impact zone ≥ 1500 mm	Pass
4	Structural Stability	No overturning under no-load and rated load conditions; displacement ≤ 10 mm	Pass
5	Anti-pinch / Anti-entanglement	Gap size: < 8 mm or ≥ 25 mm; no entanglement risk	Pass
6	Sharp Edges and Protrusions	No exposed sharp edges, burrs or dangerous protrusions	Pass
7	Material Flame Retardancy	Burning rate of textile materials ≤ 30 mm/s	Pass
8	Hazardous Substance Limits	Heavy metals (lead, cadmium, etc.) meet toy safety standard limits	Pass
9	Electrical Safety (if applicable)	Grounding resistance $\leq 0.1 \Omega$; withstand voltage 1500V/1min without breakdown	Not applicable
10	Labeling and Instructions	Clearly marked with applicable age, maximum load, and safety warnings	Pass

This test report is issued by our company in accordance with the service terms printed on the back. Responsibilities, warranties, and legal limitations are defined in the service terms. Unless otherwise stated, the results of this report are solely for the test sample. This report may not be reproduced in part without permission.

Sample image



This test report is issued by our company in accordance with the service terms printed on the back. Responsibilities, warranties, and legal limitations are defined in the service terms. Unless otherwise stated, the results of this report are solely for the test sample. This report may not be reproduced in part without permission.



This test report is issued by our company in accordance with the service terms printed on the back. Responsibilities, warranties, and legal limitations are defined in the service terms. Unless otherwise stated, the results of this report are solely for the test sample. This report may not be reproduced in part without permission.

Shenzhen Tianqi Testing Technology Service Co., Ltd.
6th Floor, Bui Iding B, Quewei Building, No. 5 Fuyu Road, Pinghu Street, Longgang District, Shenzhen, Guangdong, China
Tel: 4008857980 Website: www.tqtts.com E-mail: service@tqtts.com



This test report is issued by our company in accordance with the service terms printed on the back. Responsibilities, warranties, and legal limitations are defined in the service terms. Unless otherwise stated, the results of this report are solely for the test sample. This report may not be reproduced in part without permission.



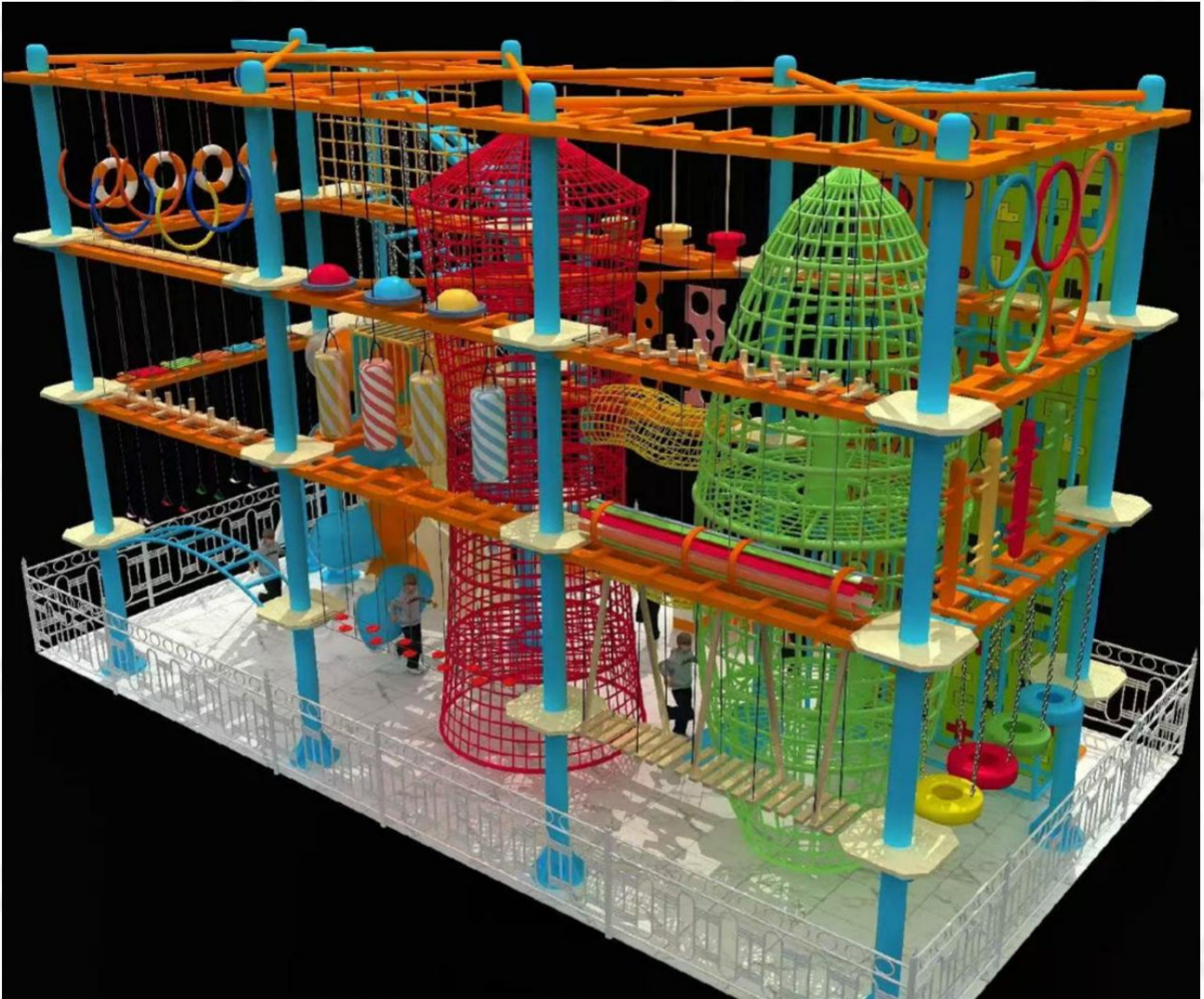
This test report is issued by our company in accordance with the service terms printed on the back. Responsibilities, warranties, and legal limitations are defined in the service terms. Unless otherwise stated, the results of this report are solely for the test sample. This report may not be reproduced in part without permission.



This test report is issued by our company in accordance with the service terms printed on the back. Responsibilities, warranties, and legal limitations are defined in the service terms. Unless otherwise stated, the results of this report are solely for the test sample. This report may not be reproduced in part without permission.



This test report is issued by our company in accordance with the service terms printed on the back. Responsibilities, warranties, and legal limitations are defined in the service terms. Unless otherwise stated, the results of this report are solely for the test sample. This report may not be reproduced in part without permission.



This test report is issued by our company in accordance with the service terms printed on the back. Responsibilities, warranties, and legal limitations are defined in the service terms. Unless otherwise stated, the results of this report are solely for the test sample. This report may not be reproduced in part without permission.



This test report is issued by our company in accordance with the service terms printed on the back. Responsibilities, warranties, and legal limitations are defined in the service terms. Unless otherwise stated, the results of this report are solely for the test sample. This report may not be reproduced in part without permission.



This test report is issued by our company in accordance with the service terms printed on the back. Responsibilities, warranties, and legal limitations are defined in the service terms. Unless otherwise stated, the results of this report are solely for the test sample. This report may not be reproduced in part without permission.

Shenzhen Tianqi Testing Technology Service Co., Ltd.
6th Floor, Bui Iding B, Quewei Building, No. 5 Fuyu Road, Pinghu Street, Longgang District, Shenzhen,Guangdong, China
Tel: 4008857980 Website: www.tqtts.com E-mail: service@tqtts.com



*** End of Report ***

This test report is issued by our company in accordance with the service terms printed on the back. Responsibilities, warranties, and legal limitations are defined in the service terms. Unless otherwise stated, the results of this report are solely for the test sample. This report may not be reproduced in part without permission.

Shenzhen Tianqi Testing Technology Service Co., Ltd.
6th Floor, Bui Iding B, Quewei Building, No. 5 Fuyu Road, Pinghu Street, Longgang District, Shenzhen, Guangdong, China
Tel: 4008857980 Website: www.tqtts.com E-mail: service@tqtts.com